

SuDS in Enfield

Thursday 27th August 2015



Text

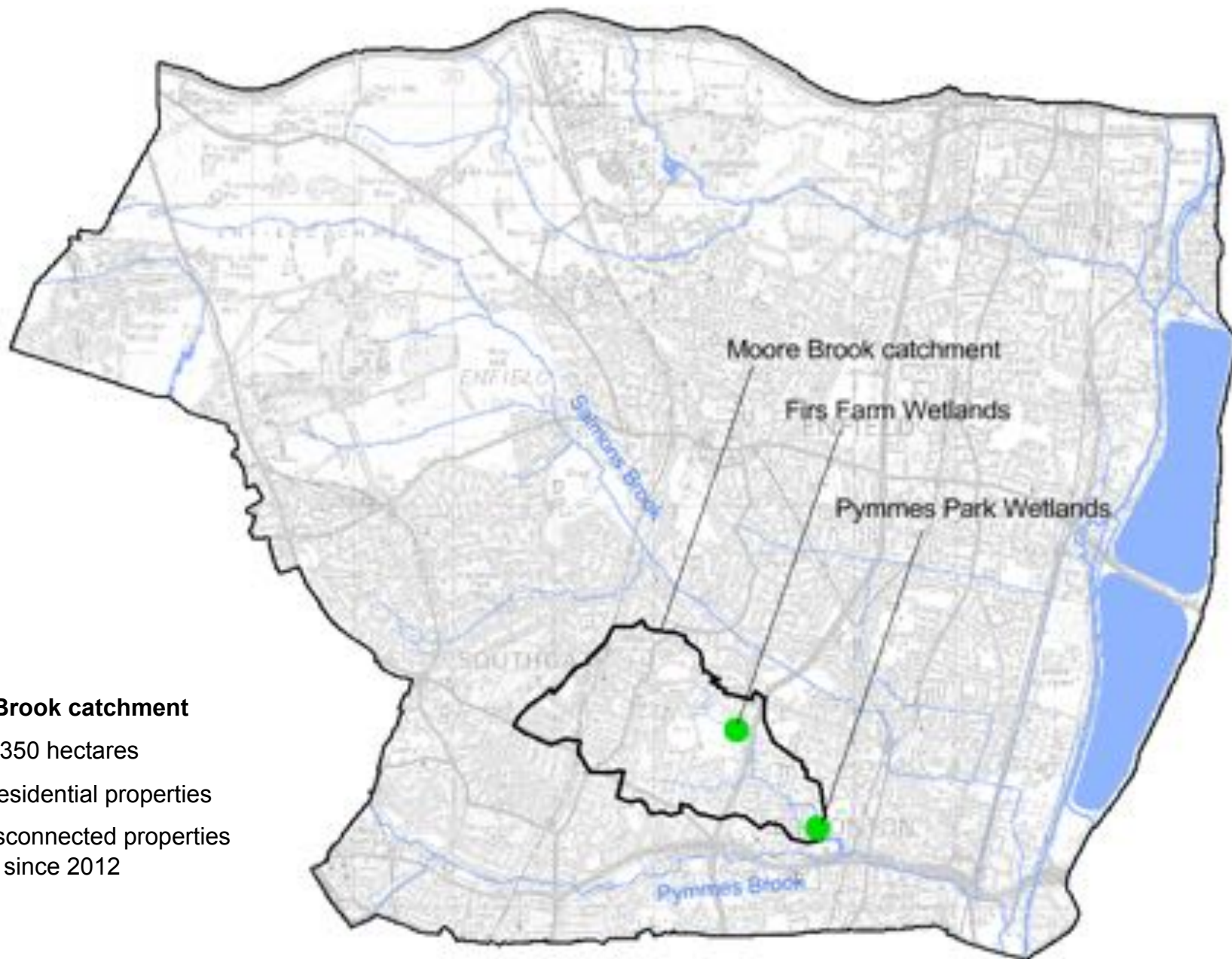


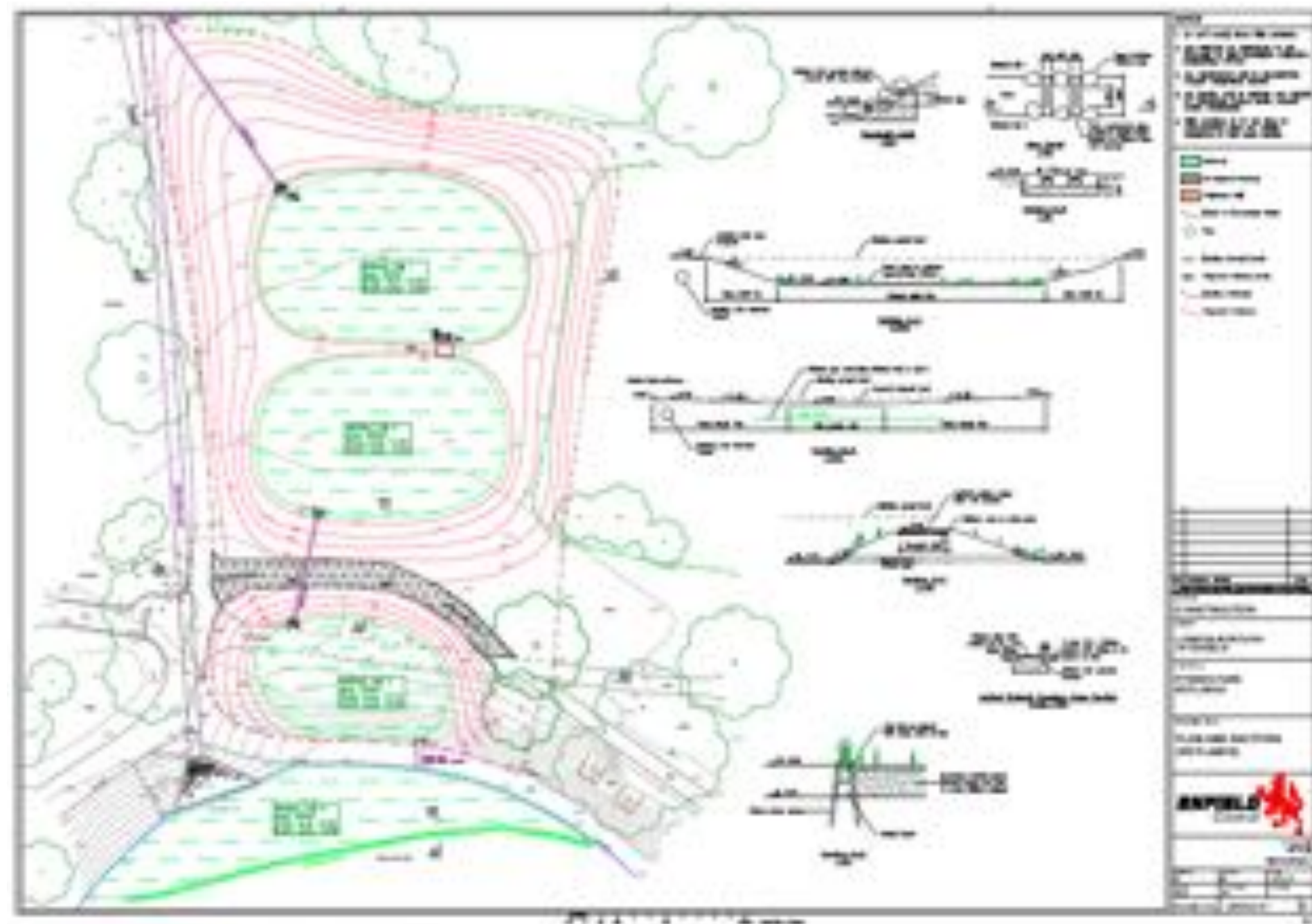
ian.russell@enfield.gov.uk

London Borough of Enfield

Moore Brook catchment

- Area ~ 350 hectares
- 8,000 residential properties
- 300 misconnected properties rectified since 2012





Pymmes Park Wetlands

- Total area ~ 5,000m²
- Wetland area ~ 2,000m²
- Volunteer planting in May 2015 organised by Thames21
- 600m² of pre-planted coir mats installed in 2 days
- Trees and shrubs to be planted in Autumn 2015



May 2015



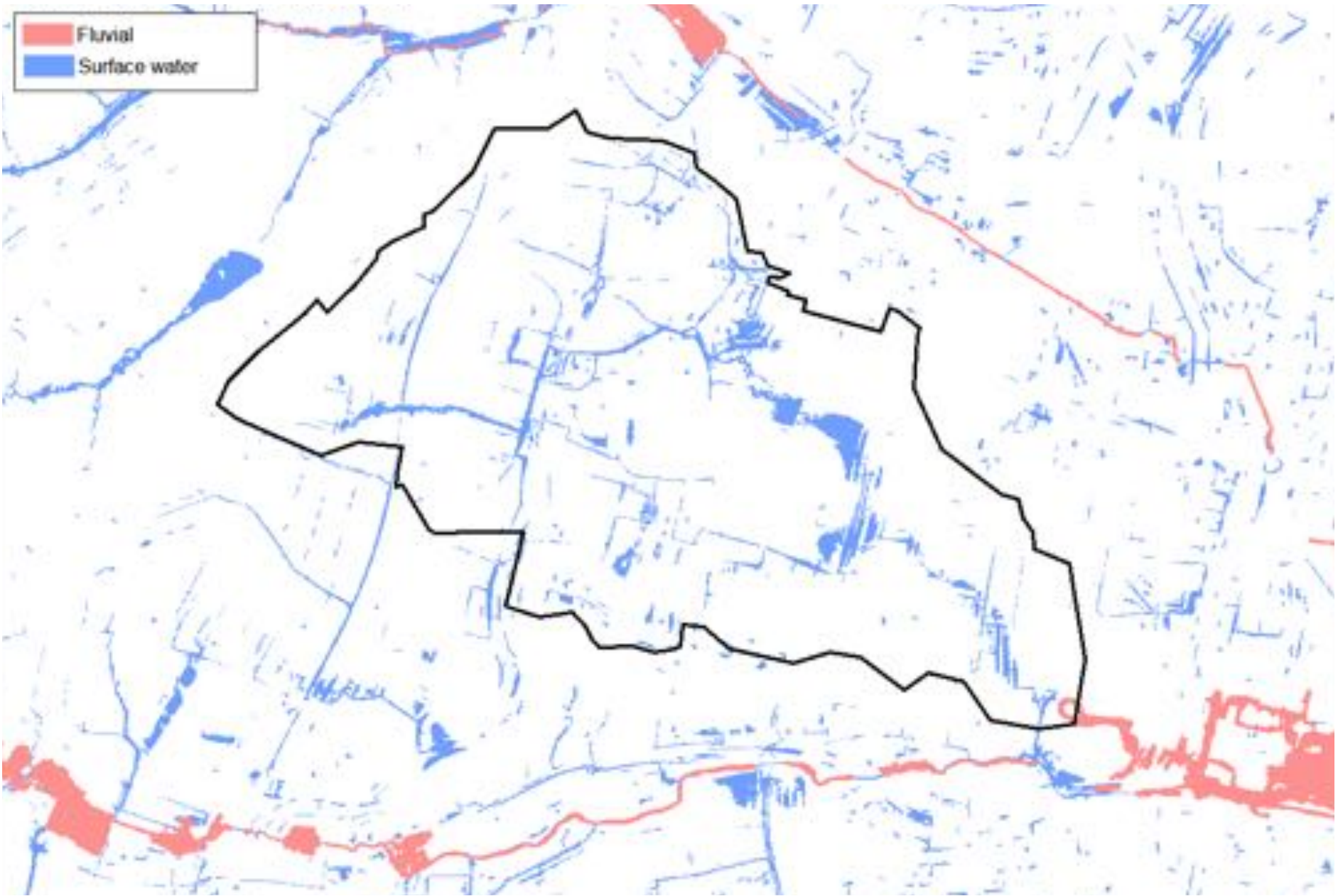
August 2015

Pymmes Park Wetlands

- Spoil used to create one new 11-a-side football pitch and significantly improve a second existing pitch
- Area of 10,000m² raised by 0.7m



Moore Brook Flood Risk Map





Firs Farm Playing Fields 21 hectares, 12 football pitches and 1 rugby pitch

Proposed Plan



Firs Farm Wetlands 30,000m³ flood storage, 2.4ha habitat enhancements including 4,000m² wetlands, 600m long cycleway

Moore Brook Catchment – summary

- Flood risk – flood risk reduced for >100 properties
- Amenity – diverse landscape with improved access for all users, seating areas and opportunities for natural play
- Biodiversity – over 3 hectares of habitat improvements, mosaic of different habitat types including woodland, wetlands, ponds and meadow
- Water quality – intensive monitoring programme to be carried out by Thames21/Enfield Council over next 2-3 years to determine impact of wetlands on reducing diffuse urban pollution, this data will be used to optimise future management of the two sites

Additional benefits:

- Education – several nearby schools have expressed interest in using Pymmes Park and Firs Farm Wetlands as an educational resource, facilitated by Thames21's Fixing Broken Rivers project
- Transport/Exercise – over 1km of new footpaths for walking/jogging/cycling

